

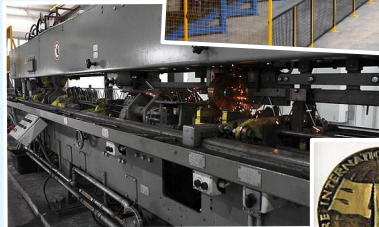


ZAKŁAD ELEMENTÓW KONSTRUKCYJNYCH

Spółka z o.o.



TRUSSES REINFORCEMENTS FABRICS



www.zek.net.pl
warszawa@zek.net.pl
tarnow@zek.net.pl
+48 22 843 42 16
+48 14 612 35 15

OFFICE
59/2 Wita Stwosza Street
02-661 Warsaw
Poland

PLANT
16A Czysza Street
33-100 Tarnów
Poland

**WE ASSURE SHORT DELIVERY
TERMS AND THE BEST QUALITY**

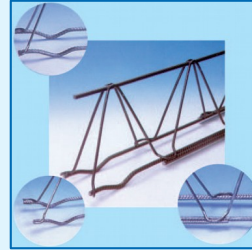
*The cheapest, most effective complete
reinforcement of floor beams and slabs*

KJ TYPE REINFORCED TRUSS

Application: all types of rib-and-slab floors, structural tile floors, concrete and ceramic floors (TERIVA, FERT, CERAM, EF-45) as well as slab floors (PSKJ, FILIGRAN, TRIGON)

Technical parameters:

truss height: 90-280 mm
upper wire: 6-12 mm
bottom wires: 6-12 mm
Z-bar: 5-7 mm
Z-bar span: 200 mm



Technological advantages

connected with limitation of different sections of reinforcing steel, its straightening, cutting and laying between the bars of the truss bottom strip.

K TYPE TRUSS

Application: rib-and-slab structural tiles floors TERIVA, FERT, CERAM, EF, requiring additional reinforcement of bottom bars on the whole length of the truss between walls (supports) as well as combined slab-and-reinforced-concrete FILIGRAN, TRIGON.



Technical parameters:

truss height: 70-300 mm
upper wire: 6-14 mm
bottom wires: 5-14 mm
Z-bar: 5-7 mm
Z-bar span: 190-210 mm
max truss length: 14000 mm

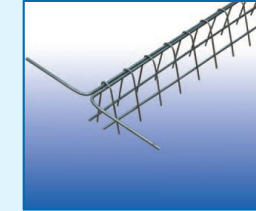
Trusses KJ and K have:

The Certificate of Conformity No 2/ZW/11 issued by the Institute of Ceramics and Building Materials

Truss is produced from cold-rolled, ribbed and smooth steel of plasticity limit 500 MPa in accordance with the Technical Approvals conferred by the Institute of Building Technology in Warsaw, which is equivalent of the German Standard **DIN-488** and **PN-EN 10080:2007**

SUPPORT REINFORCEMENT

An integral part of rib-and-slab structural tiles floors with super-concrete assembled additionally on the floor along the wall on one side or on both sides, and partly connected with the ring.

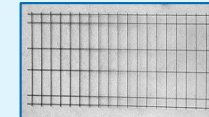


Support reinforcement, marked P-1 and P-2 as flat nets, and Z-1 and Z-2 as an element of super-truss structure.

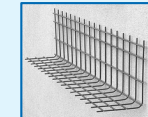
FLAT & CURVED FABRICS

Constructional measurements:

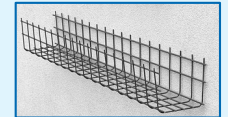
width: 500-3600 mm
length: 240-8000 mm
longitudinal bars' diameter: 4,5-8 mm
cross bars' diameter (two types): 4,5-8 mm
(and) 4,5-12 mm
min. distance between longitudinal bars: 50 mm
min. distance between cross bars: 30 mm
max. distance between cross bars: 1000 mm



flat fabric



"L" fabric

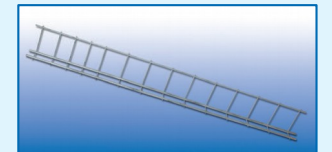


"U" fabric

LINTEL FABRICS L19/12 & L19/9

Types: 'D', 'N' and 'S'

bottom wires 6-12 mm
upper wire: 5 mm
cross bars: 4,5 mm



QUALITY ASSURANCE

We carry out **permanent inspection and supervision** of the quality of our products.